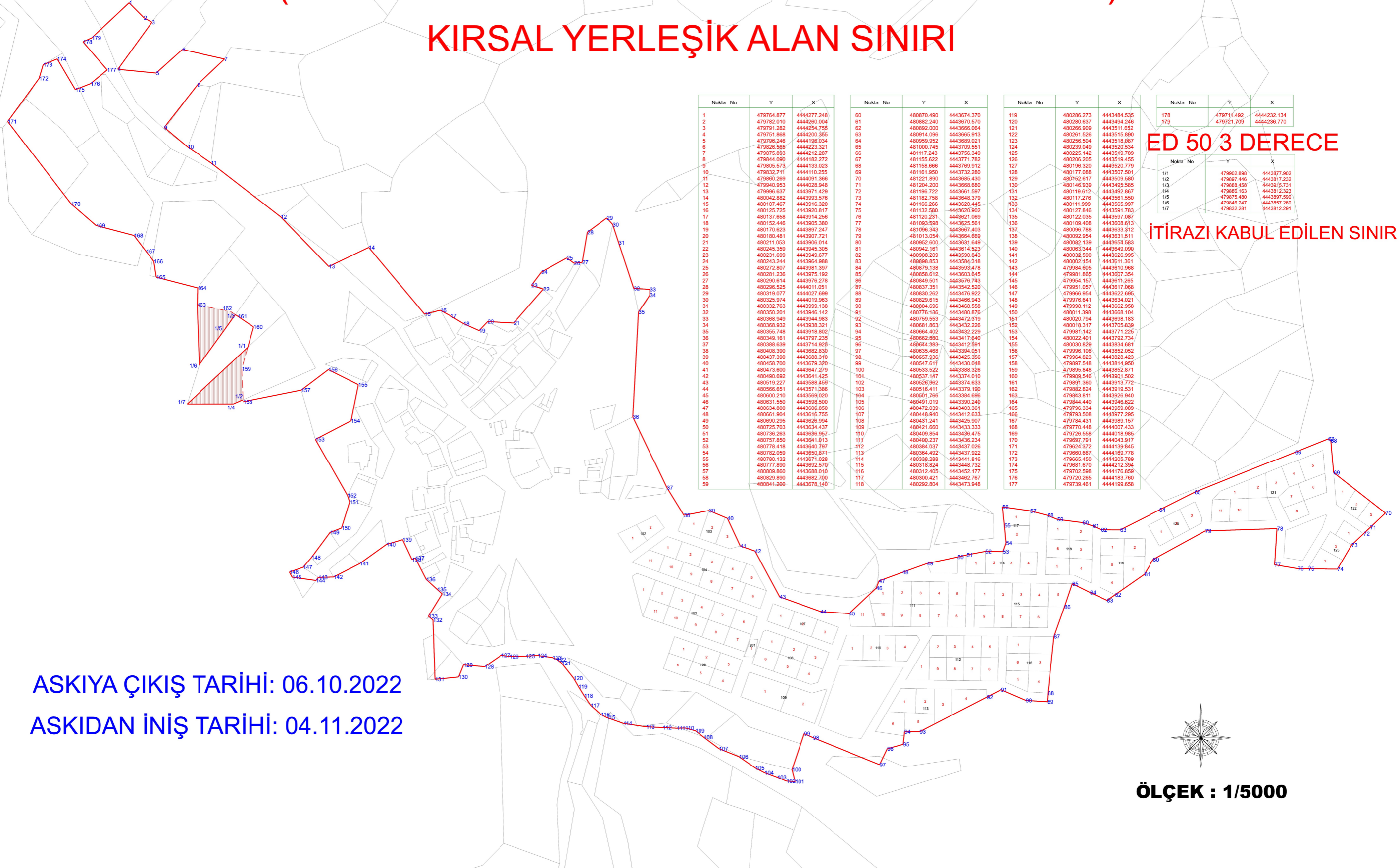


SARIBEYLER MAHALLESİ (5216 SAYILI KANUNUN EK-3 MADDESİNE GÖRE) KIRSAL YERLEŞİK ALAN SINIRI



Nokta No	Y	X
1	479764.877	444277.240
2	479762.010	444260.004
3	479791.282	444254.755
4	479751.868	444200.355
5	479798.246	444398.034
6	47989.365	444223.321
7	479875.893	444212.287
8	479844.090	444182.272
9	479895.573	444133.223
10	479832.711	444110.255
11	479860.289	444091.366
12	479940.953	444028.948
13	479996.837	4443971.429
14	480042.892	444395.676
15	480107.467	444391.320
16	480125.725	4443920.817
17	480137.658	4443914.256
18	480152.446	4443905.390
19	480170.623	4443897.247
20	480180.481	4443907.721
21	480211.053	4443906.014
22	480245.359	4443945.305
23	480231.699	4443949.677
24	480243.244	4443964.988
25	480272.807	4443981.397
26	480291.236	4443975.192
27	480290.614	4443976.278
28	480296.525	4444011.051
29	480319.077	4444027.899
30	480325.974	4444019.983
31	480332.763	4443999.138
32	480350.201	4443946.142
33	480368.949	4443944.983
34	480368.532	4443938.321
35	480355.748	4443918.802
36	480349.161	4443797.235
37	480388.839	4443714.928
38	480428.390	4443682.830
39	480437.390	4443688.310
40	480458.700	4443679.320
41	480473.800	4443647.279
42	480490.892	4443641.425
43	480519.227	4443588.459
44	480566.651	4443571.386
45	480600.210	4443569.020
46	480631.550	4443568.500
47	480634.800	4443606.850
48	480661.904	4443616.755
49	480690.295	4443626.994
50	480725.703	4443634.437
51	480736.293	4443636.967
52	480767.850	4443641.613
53	480778.418	4443640.797
54	480782.059	4443650.871
55	480780.132	4443671.028
56	480777.890	4443692.570
57	480809.860	4443688.010
58	480829.890	4443682.700
59	480841.200	4443678.140

Nokta No	Y	X
60	480870.490	4443674.370
61	480862.240	4443670.570
62	480892.000	4443666.064
63	480914.096	4443665.913
64	480959.522	4443669.021
65	481000.142	4443705.931
66	481117.243	4443756.349
67	481155.622	4443771.782
68	481158.666	4443769.912
69	481161.950	4443752.280
70	481221.890	4443685.430
71	481204.200	4443668.680
72	481196.722	4443661.597
73	481192.758	4443648.379
74	481166.266	4443620.445
75	481132.580	4443620.902
76	481120.231	4443621.069
77	481093.998	4443625.961
78	481096.343	4443667.403
79	481013.054	4443664.689
80	480952.600	4443631.649
81	480942.161	4443614.523
82	480908.209	4443590.843
83	480898.853	4443584.318
84	480879.138	4443593.478
85	480858.812	4443603.845
86	480849.501	4443576.743
87	480837.351	4443542.520
88	480830.262	4443476.922
89	480829.615	4443468.943
90	480804.696	4443468.558
91	480776.136	4443480.876
92	480759.553	4443472.319
93	480731.863	4443452.226
94	480664.402	4443432.229
95	480662.880	4443417.640
96	480644.383	4443412.591
97	480635.468	4443394.051
98	480657.936	4443425.366
99	480547.611	4443430.048
100	480533.522	4443388.326
101	480527.147	4443374.010
102	480526.962	4443374.633
103	480516.411	4443379.190
104	480501.766	4443364.696
105	480491.019	4443390.240
106	480472.039	4443403.361
107	480448.940	4443412.633
108	480431.241	4443425.907
109	480421.860	4443433.333
110	480409.854	4443436.475
111	480400.237	4443436.234
112	480384.037	4443437.026
113	480364.492	4443437.922
114	480339.288	4443441.618
115	480318.824	4443448.732
116	480312.405	4443452.177
117	480300.421	4443452.767
118	480292.804	4443473.948

Nokta No	Y	X
119	480286.273	4443484.535
120	480280.637	4443494.246
121	480266.909	4443511.652
122	480261.526	4443515.890
123	480256.504	4443516.087
124	480239.049	4443520.534
125	480225.142	4443519.789
126	480206.205	4443519.455
127	480196.320	4443520.779
128	480177.088	4443507.501
129	480152.617	4443509.580
130	480146.939	4443495.585
131	480119.612	4443492.867
132	480117.276	4443561.550
133	480111.999	4443565.997
134	480127.846	4443591.783
135	480122.035	4443597.087
136	480109.408	4443608.813
137	480096.788	4443633.312
138	480092.954	4443631.511
139	480062.139	4443654.583
140	480063.944	4443649.090
141	480032.590	4443626.995
142	480002.154	4443611.361
143	479984.605	4443610.968
144	479981.865	4443607.345
145	479954.157	4443611.265
146	479951.057	4443617.068
147	479966.854	4443622.695
148	479976.641	4443634.021
149	479998.112	4443662.958
150	480011.398	4443668.104
151	480020.794	4443698.183
152	480016.317	4443705.339
153	479981.142	4443771.225
154	480022.401	4443792.734
155	480030.829	4443834.681
156	479996.106	4443852.052
157	479964.823	4443828.423
158	479979.548	4443814.950
159	479985.848	4443852.871
160	479969.546	4443901.502
161	479981.360	4443913.772
162	479882.824	4443919.531
163	479843.811	4443926.940
164	479844.440	4443946.522
165	479796.334	4443969.085
166	479793.508	4443977.295
167	479784.431	4443989.157
168	479770.448	4444007.433
169	479726.558	4444016.988
170	479697.791	4444043.917
171	479624.372	4444139.845
172	479660.667	4444169.778
173	479665.450	4444205.789
174	479681.670	4444212.384
175	479702.598	4444176.859
176	479720.265	4444183.760
177	479739.461	4444199.658

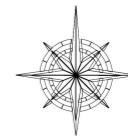
Nokta No	Y	X
178	479711.492	4444232.134
179	479721.705	4444236.770

ED 50 3 DERECE

Nokta No	Y	X
1/1	479902.898	4443877.902
1/2	479897.446	4443817.232
1/3	479886.456	4443915.731
1/4	479886.103	4443812.323
1/5	479875.480	4443897.590
1/6	479846.247	4443857.260
1/7	479832.281	4443812.291

İTİRAZI KABUL EDİLEN SINIR

ASKIYA ÇIKIŞ TARİHİ: 06.10.2022
ASKIDAN İNİŞ TARİHİ: 04.11.2022



ÖLÇEK : 1/5000